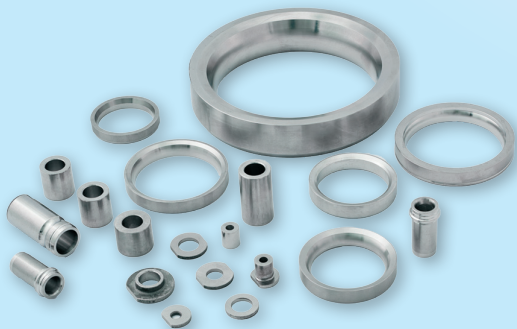


In most regions of the world, automotive emission and fuel consumption legislation are tightening. Often smaller engines with higher performance are called upon to meet these legislative changes. Downsized engines, accompanied by high performance turbochargers require materials and parts to perform at their limits regarding wear-, heat- and corrosion-resistance.

Stellite™ and Tribaloy™ Alloys enable you to lift those levels up to where you need them. Use them in form of coatings and casted parts to help you achieve this excelled performance with smaller engines through improved component technology, and surface application of our materials – which increase fuel efficiency and component lifetime.

Solid Stellite™ & Tribaloy™ components are found in turbochargers and EGR bushes while Stellite™ & Tribaloy™ coatings are used to protect the sealing surface of engine valves and surfaces of EGR shafts.

Higher performance and extended engine lifetime – possible with Stellite™ and Tribaloy™ components and coatings



**For more information or inquiries,  
please contact:**

**Deloro Wear Solutions GmbH**

Zur Bergpflege 51-53 | D-56070 Koblenz

Tel.: +49 261 8088 0 | Fax: +49 261 8088 35

E-mail: [auto@deloro.com](mailto:auto@deloro.com)

**Your source for reliable Wear Solutions  
that ensure productivity**

Deloro Group is dedicated to providing superior and reliable solutions for Wear and Corrosion Protection. When you partner with Deloro, you can expect cost-optimized solutions that will enhance and extend the life of your machinery/parts.

**Deloro**  
Wear Solutions

Offering Bespoke  
Components, Coating  
Services, Consumables  
and Equipment

**Deloro**  
Coatings

Offer high-quality  
coating services utilizing  
a wide range of cobalt,  
nickel, and iron-based  
alloys as well as  
tungsten carbide

**Deloro**  
HTM

Offering HIP  
Process for  
re-densification,  
near net shape  
and bi-metallic  
components

**Deloro**  
Microfusione

Leading manufacturing  
services provider for  
highly-demanding air- and  
vacuum-cast super alloy  
investment castings

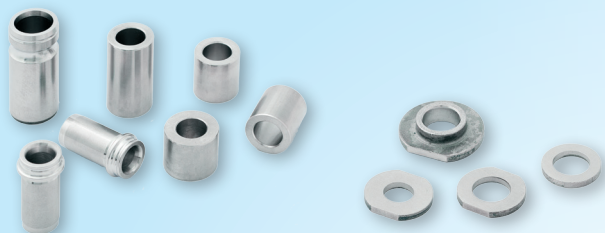
**Deloro**  
Wear Solutions

**AUTOMOTIVE  
APPLICATIONS**

**FUEL EFFICIENCY &  
HIGH PERFORMANCE**

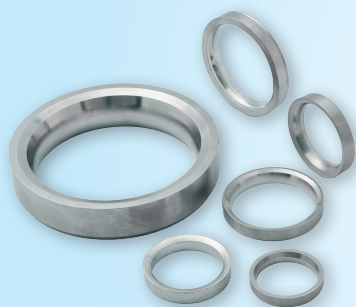


### Common casted components are:



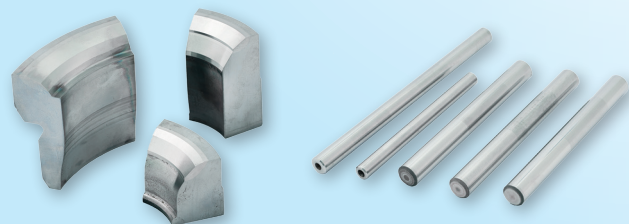
bushes

washers



valve seat rings

### Common coated components are:



valve seat rings

shafts, e.g. for EGR

## DEMANDS

Materials and components to perform at their limits regarding wear, corrosion & heat resistance up to 900 °C and beyond.

Mechanical endurance for extended lifetime.

## DRIVERS

- Downsizing
- Fuel efficiency and emission limits
- High performance
- Durability
- Lifetime
- Low maintenance
- High temperature, corrosion and wear

## SOLUTIONS

Stellite™ Alloys and Tribaloy™ enable you to achieve this excellent performance as castings or coatings.

## TECHNOLOGIES

- Sand casting
- Investment casting
- Resin shell casting
- Centrifugal casting
- HVOF Thermal spraying
- Plasma Transferred Arc (PTA)

## SIZE & GEOMETRY

Sizes are generally only limited by the process technology employed. We will help you find the solution that fits your needs

## COMPONENTS

Employ our castings as seatrings, seals, bearings, bushes, washers, spacers, actuators and our coatings on valves, seatrings, pistons and shafts.

## APPLICATIONS

- Turbochargers
- Exhaust gas recirculation systems (EGR)
- Damper valves
- Engine brakes
- Valvetrain
- Pistons

## CERTIFICATIONS

- ISO 9001
- ISO TS 16949
- ISO 50001
- VDA 6.3